

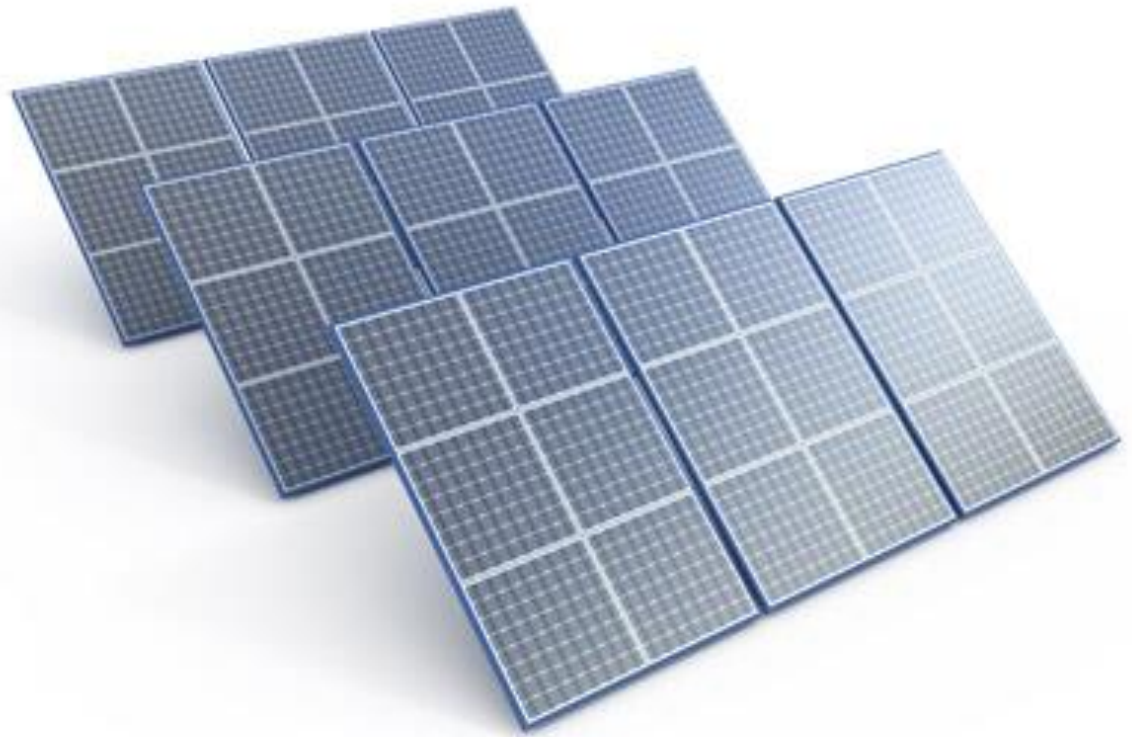


Setting the national agenda: national policy to support energy efficiency cities

CIEEC 2016, Puebla, Mexico

Benoit LEBOT, Executive Director IPEEC





Multiple Benefits of Energy Efficiency



Cities & Energy: 4 major responsibilities

Cities:

1. Purchase & consume energy
2. Produce & distribute energy
3. Plan & invest in infrastructure
4. Communicate & Motivate

National policies can provide support to each dimension

Energy Efficiency needs access to:

1. Information
2. Technologies
3. Know how
4. Finance

Vision
Dedicated Staff
Work Plan

Role of National Governments

Regulations and their stability
are the key drivers for the
demand of and the supply for
energy efficiency investments

Ingredients of an ideal EE policy package 1

- **National Policy Framework** (EE law);
- **Dedicated human resources** (institutions or existing departments);
- **Dedicated financial resources;**

Ingredients of an ideal EE policy package 2

- **Energy Efficiency is not only an energy policy**
- **Set level playing field** (market price for energy, ruling utilities)
- **EE needs time and lots of patience...**

Ingredients for a ideal EE policy package 3

- Energy efficiency requires and consumes lots of data
- **Significant investments** is needed in data collection and analysis (setting the baseline)
- Governments to set metrics, data collection channels...

Ingredients for a ideal EE policy package 4

- **Energy bills reduction is just one of the benefits of energy efficiency**
- **Metrics & data collection to assess non energy benefits**
- **Energy Efficiency Targets**
- **Monitor progress: EE indicators**

Ingredients for a ideal EE policy package 5

- **Minimum Energy performance standards on equipment, systems & buildings**
- **Labeling, rating, certification, codes**
- **New construction & existing buildings**
- **Include energy in land use & urban development**

GIS, ITC, Big Data, BIM = great opportunities



European Car Label



Consommation de carburant et émission de CO₂

Information en application de la directive 1999/94/CE.

Marque : **VOITURE**

Modèle : **Xxx**

Version : **5P 1.4 HDi**

Énergie : **Diesel**

Consommation de carburant

Mesures effectuées selon la directive 90/1206/CEE modifiée 1996/100/CE.

Consommation mixte :

4,2 l/100 km

Consommation urbaine : 5,3 l/100 km

Consommation extra-urbaine : 3,6 l/100 km

CO₂ Le CO₂ (dioxyde de carbone) est le principal gaz à effet de serre responsable du changement climatique.

Mesures effectuées selon la directive 90/1206/CEE modifiée 1996/100/CE.

110 g/km

Émissions de CO₂ faibles

inférieures ou égales à 100 g/km **A**

de 101 à 120 g/km **B**

de 121 à 140 g/km **C**

de 141 à 160 g/km **D**

de 161 à 200 g/km **E**

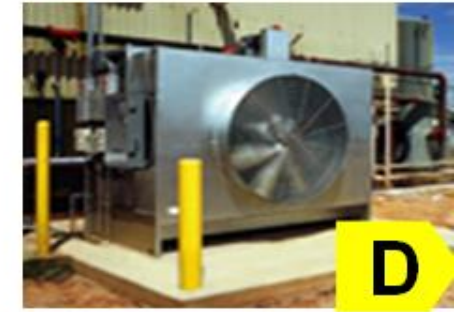
de 201 à 250 g/km **F**

supérieures à 250 g/km **G**

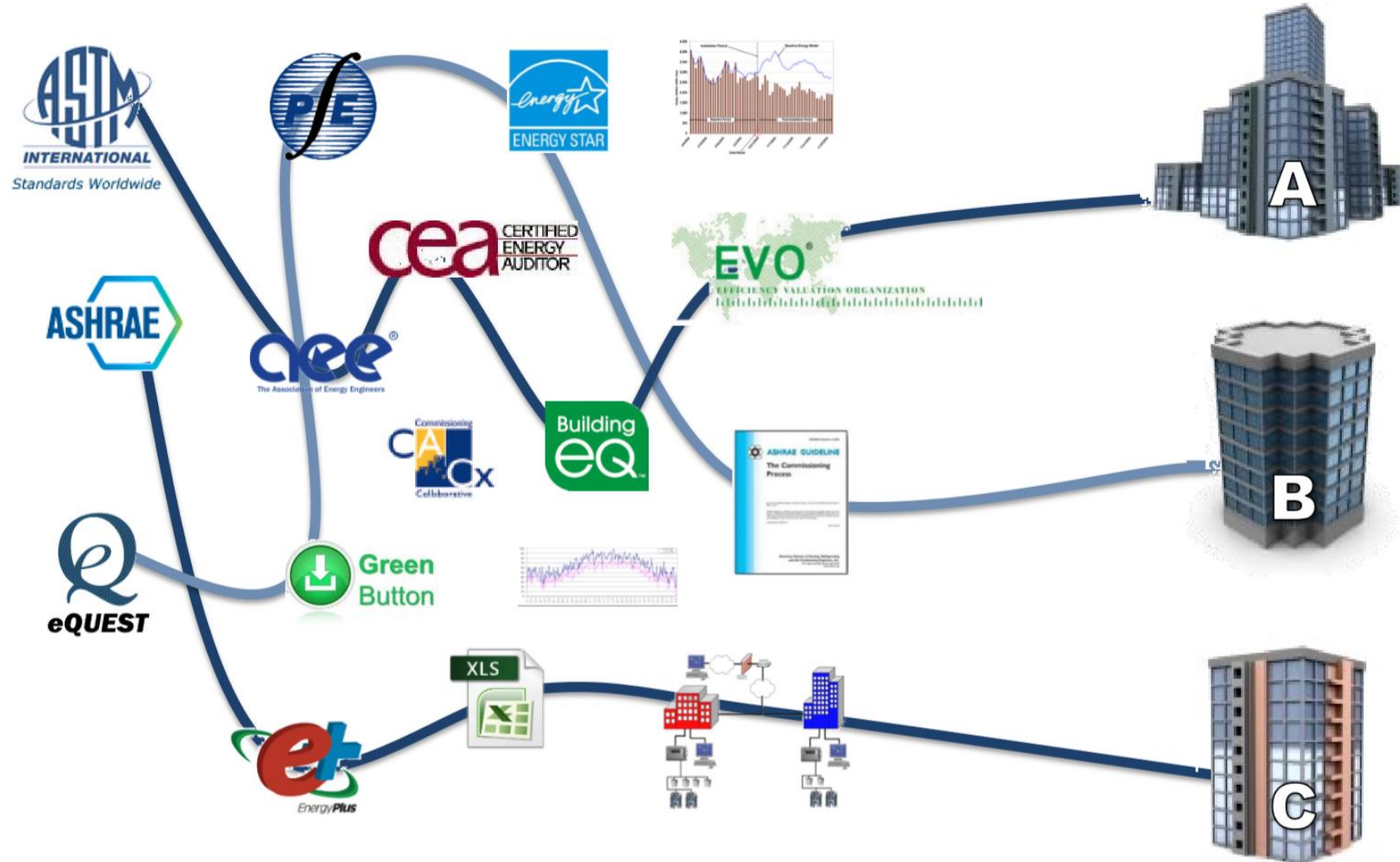
Émissions de CO₂ élevées

La consommation de carburant et les émissions de CO₂ d'un véhicule sont fonction non seulement de son rendement énergétique, mais également du comportement au volant et d'autres facteurs non techniques. Les informations sur les consommations de carburant et les émissions de CO₂ de tous les modèles de voitures particulières neuves, contenues dans le guide de l'ADEME, peuvent être obtenues gratuitement dans tous les points de vente, auprès de l'ADEME et consultées sur le site internet : www.ademe.fr

Labelling can also be applied to...



What Is An Energy Efficiency Project?



Ingredients for a ideal EE policy package 6

- **Utility programs (DSM)**
- **Engage the finance community**
- **Set financial/fiscal measures**
- **MRV & Inspection scheme**

Ingredients for a ideal EE policy package 7

- **Permanent communication on all levels**
- **Mainstream EE in all line Ministries**
- **Good balance between National & Local implementation (experiment).**
- **When appropriate, line up with international or regional dynamics.**

Conclusion: no longer an option

- All levels to be mobilized, in all economies;
- Significant public \$ is necessary on EE fundamentals, but returns are high
- National versus local: experiment, validate, raise EE ambition
- International Cooperation can enhance the deployment of Energy Efficiency.



Thank you

www.ipeec.org

benoit.lebot@ipeec.org

Follow IPEEC on:

