

Delivering on M300 faster Together

Connecting People through the PEPT Program in Côte d'Ivoire

17/03/2026



MISSION 300
#PoweringAfrica





AGENDA

01

**Cote d'Ivoire as
example of the
Mission 300 progress**

02

What is PEPT?

03

WBG Support

04

**Lessons
Learned**



Cote d'Ivoire as example of the M300 progress



Tu Chi Nguyen

Senior Energy Economist

World Bank



Mission 300 in Action: Connecting 300 Million Africans by 2030

Côte d'Ivoire Leading through its National Energy Compact.

Mission 300: Accelerating Access in Africa



300 Million People
to be Electrified by 2030



\$9 Billion
Mobilized to Date

\$5B
IFC & MIGA
for Private
investment

Côte d'Ivoire: Mission 300 Pioneer

Phase 1: Jan 2025



Reliable Access



Affordable



Sustainable

: Compact Delivery & Monitoring



Renewable
Energy



Off-Grid
Access



Regional
Integration



Grid
Resilience



Private
Investment



Financial
Stability



Impressive progress — but an unfinished job without PEPT

Universal coverage ≠ universal access:
98% grid coverage, but millions remain unconnected without PEPT.

Affordability is the bottleneck
A US\$250 upfront fee keeps households off-grid

Beyond grid expansion
Mission 300 succeeds only when coverage meets affordable connections.

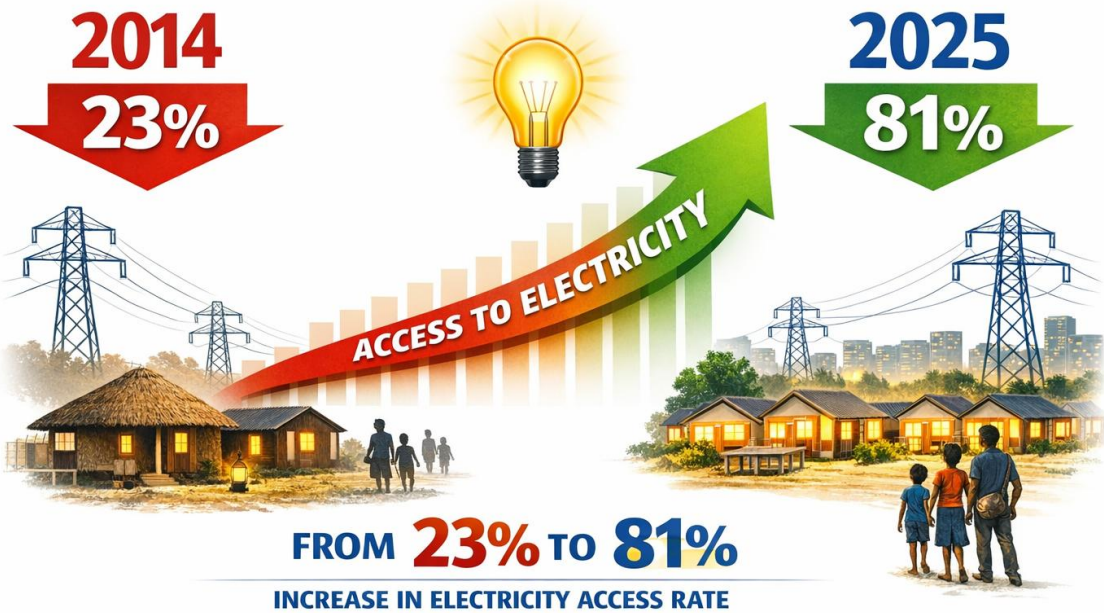
The infographic is divided into two main sections. The left section, 'Affordability Barriers', features a hand holding a stack of banknotes labeled 'CFA 150 000 / US\$250' over a brick wall labeled 'FRAIS DE CONNEXION'. Below the wall are several houses, some with an 'X' over them, and a magnifying glass focusing on one house. The right section, 'Risks & Perspectives', shows three numbered icons: 1. 'illegal connections' (a hand plugging a wire into a wall outlet), 2. 'utility losses' (a meter with a cracked screen and falling coins), and 3. 'safety risks' (a transformer with flames). Below these is a map of Africa with a focus on Côte d'Ivoire and a globe with icons for 'AGIR À L'ÉCHELLE (SCALE)', 'ABORDABLE (AFFORDABLE)', and 'DURABLE (SUSTAINABLE)', surrounded by portraits of diverse people.



PEPT Program Result on Electrification in Côte d'Ivoire

Over 2.7 million households connected, benefiting over 14 million people (2014–2025).

From 30,000 beneficiaries in 2015 to cruising speed in 2025, with 550,000 connections per year.





What is PEPT?



Sounkalo Coulibaly

PEPT Expert – CI-ENERGIES



Empowering Communities through Affordable Electricity Access

Programme Electricite Pour Tous (Electricity For All Program)

01

Universal and equitable access by 2030

The PEPT supports the government's vision for universal electricity access, with 70% of new connections in rural areas to reduce urban-rural disparities.

02

Addressing Electricity Affordability

The PEPT simplifies connection procedures, delivers in-home installations, and offers repayment over 2–10 years, recovered through electricity consumption.

03

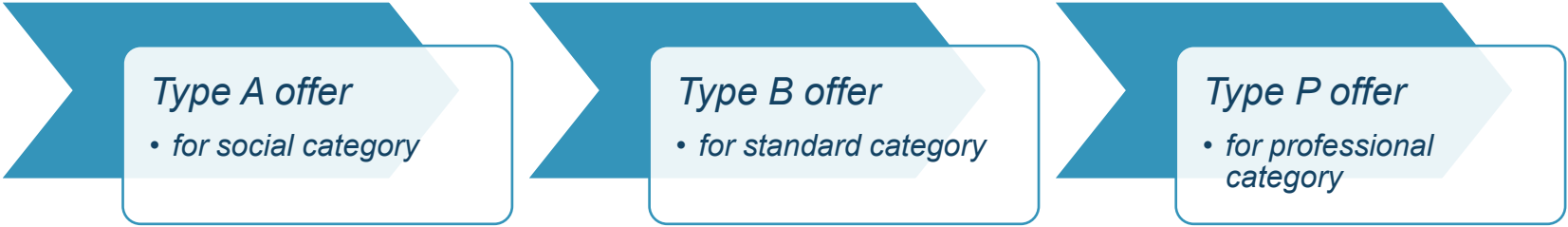
Improved livelihoods and system integrity

Expanding access improves living conditions, especially in remote areas, while reducing fraud through standardized, safe, and legal connections



Empowering Communities through Affordable Electricity Access

PEPT provides differentiated commercial offers tailored to users' social categories and purchasing power



Type of Offer	Geographical Area	Initial Deposit (FCFA)	Connection Fee (FCFA)	Repayment Period (Years)	Subscribed Rate
A0	Rural & Small Urban	1,000	157,011	10	Social / 5A
A1	Rural & Small Urban	1,000	229,359	10	Social / 5A
A2	Rural & Small Urban	1,000	275,539	10	Social / 5A
A3	Rural & Small Urban	1,000	306,326	10	Social / 5A
B00	Major Urban	1,000	190,349	7	Social / 5A
B10	Major Urban	1,000	190,349	5	General / 10A+
PA	Rural	10,000	190,349	5	Professional / 5-15A
PB	Urban	20,000	151,661	3	Professional / 5-15A

PEPT Kits – Indoor Installations



1 Room House – Kit A1

1 Socket 

  2 Light Points



2 Room House – Kit A2

     3 Light Points

  2 Sockets 3 Light Points



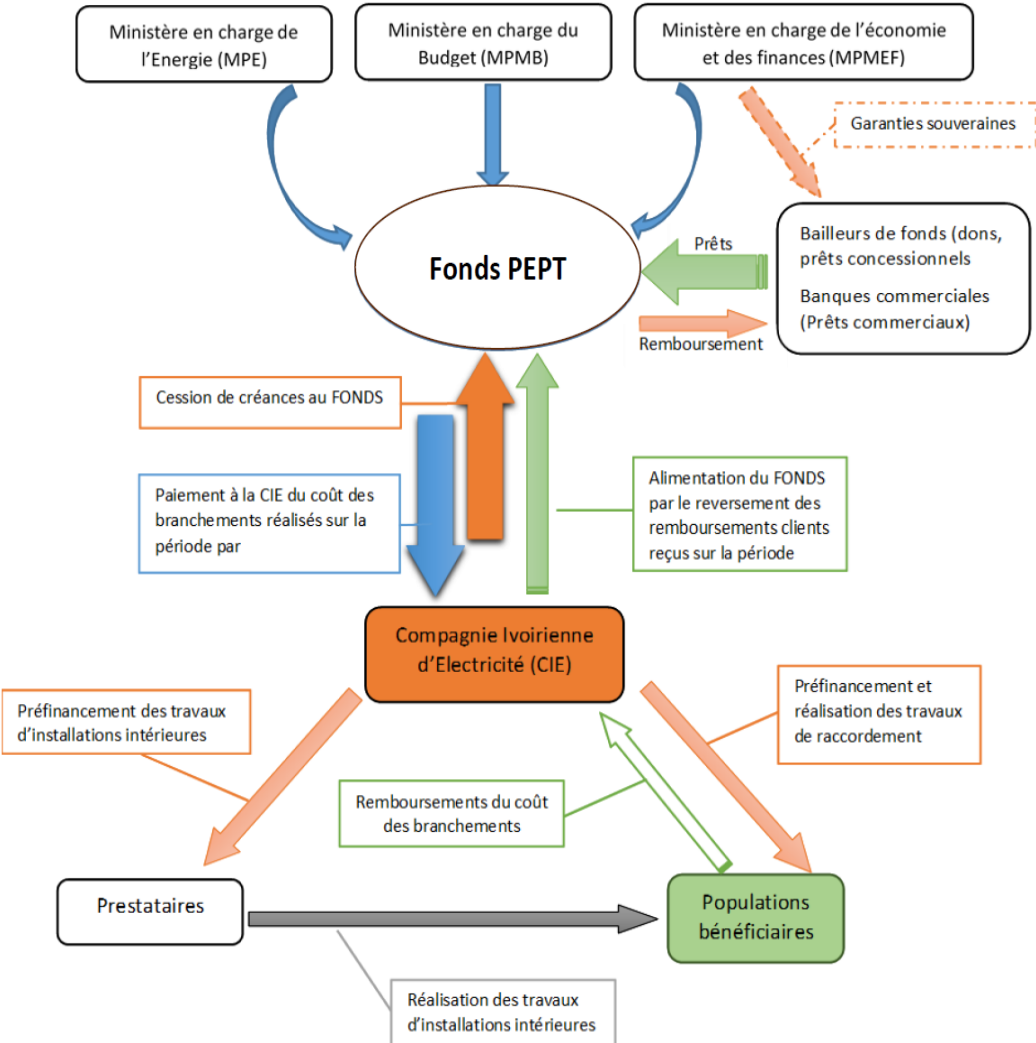
3 Room House – Kit A3

      4 Light Points

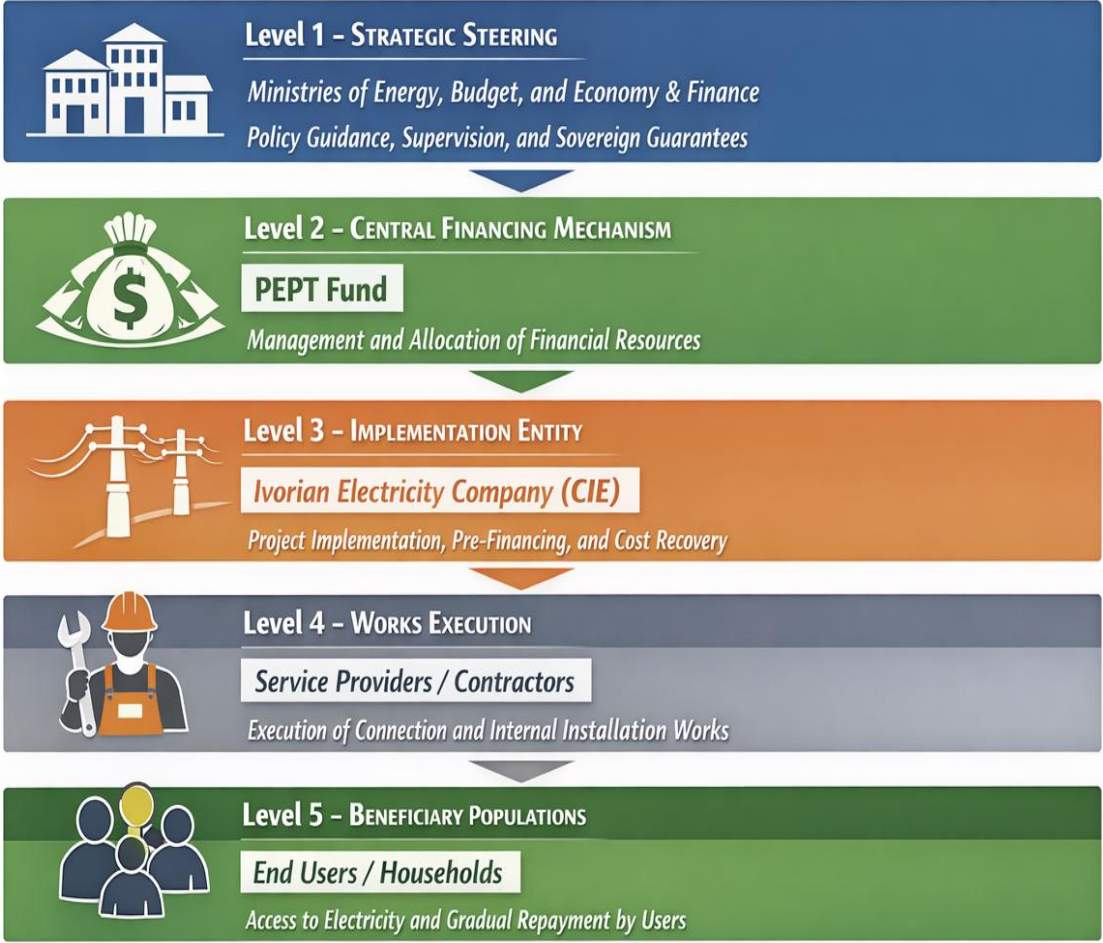
   3 Sockets 4 Light Points



Empowering Communities through Affordable Electricity Access



READING OF THE PEPT SCHEME





IMPACT SOCIAL



World Bank Group Support



IMPACT SOCIAL



Additional Financial Ressources through Innovative financing

WBG/IFC Support



Kpantcha Ouattara
Investment Officer
WBG/IFC



WBG Support : Financial Innovation to accelerate Electricity Access

PEPT Funding and Impact



FCFA 120 billion mobilized in two Phases (2023 and 2025)



800,000 new electricity connections



Improved quality of life



Accelerated program rollout
& Optimized electricity sector cash flows

A First in the WAEMU Financial Market



First Multi-Tranche Securitization: 3 Senior Tranches



First Social Bonds Issuance (Moody's)



First Long Term Maturity: 15 Years



First Operation with Multiple Anchor Investors: IFC, EAAIF, AfdB, NORFUND

Financial Innovation & Large-Scale Social Impact

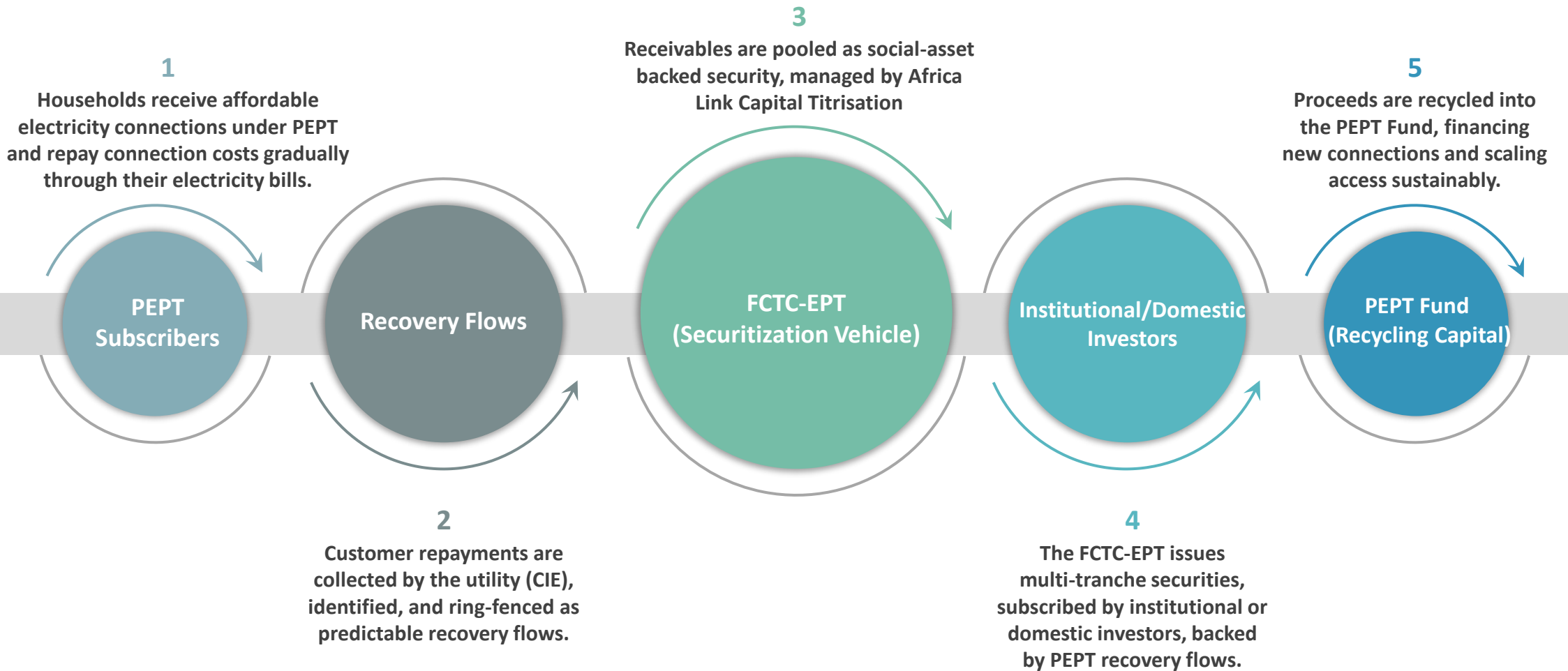
FCTC-EPT Securitization: A Groundbreaking First in the WAEMU Market

An end-to-end model linking households to capital markets to finance electricity access.



WBG Support : Financial Innovation to accelerate Electricity Access

PEPT Securitization Flow





“

Tailored-Design aligned with the National Strategy



Coordinator NEDA / CI-ENERGIES



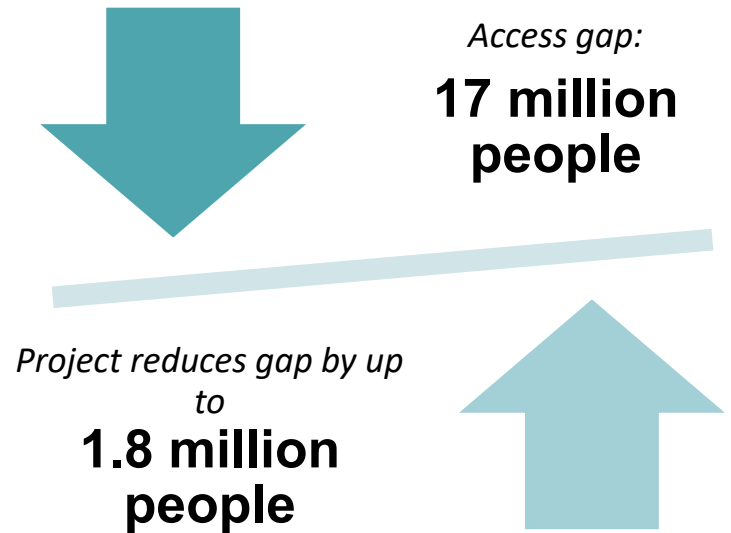
WB support through National Electricity Digitalization and Access

Project Snapshot

Objective: (i) increase access to electricity and (ii) improve the quality of electricity service, in lagging regions of Côte d'Ivoire; and (iii) to enhance institutional capacity to support electrification programs in the country

Approach: Program for Results (PforR) (2023-2028) tracking indicators related to access, extension and digitalization of the distribution and transmission network

Financing Envelope	IDA contribution	Government contribution
US\$400 million	US\$300 million	US\$100 million



Project Components

Component 1: Increase access to grid electricity services through affordable connections

- Invest in climate-resilient distribution grid extension and densification
- Contribute to the PEPT (Electricity for All program) to finance household and social infrastructure connections

Component 2: Improve CI-Energies performance through enhanced digital capacity

- Install and operationalize telecommunication devices for MV grid
- Rehabilitate targeted distribution grid and substations

Component 3 (TBD): Support implementation and capacity development

- Institutional support
- Upgrade capacity for climate resilience and cybersecurity

Key elements of success



Excellent performance after the halfway point

Disbursement rate: **60.91%** / physical achievement rate: **61%**

At the level of the PEPT: **92% completed** / Extension of the network: **67% completed**



Why?

- **Strong strategic alignment between NEDA and government programs**

PRONEX (National Distribution Network Extension Program): Extending and densifying the network to increase connections

PEPT (Electricity for All Program): Reducing financial barriers to household electrification

- **An innovative financing mechanism (PforR):** Autonomy and strong management capacity, results-based management
- Close coordination between the Coordination Unit NEDA (embedded in CI-Energies) and other stakeholders (PEPT fund, PEPT technical committee, CIE, Ministry of Energy, etc.)
- Strong intentional support from the WB (IPF TA component, etc.)



IMPACT SOCIAL



Lessons Learned



Jean-Marc Adjei
Energy Specialist
World Bank



Key Success Factors of the PEPT Model

Alignment, last-mile focus, execution capacity, and innovative financing were critical to PEPT's success.

01

Strong strategic alignment
with Government support at the highest level.

02

Last-mile focus
through targeted grid extension and densification, enabling rapid connections.

03

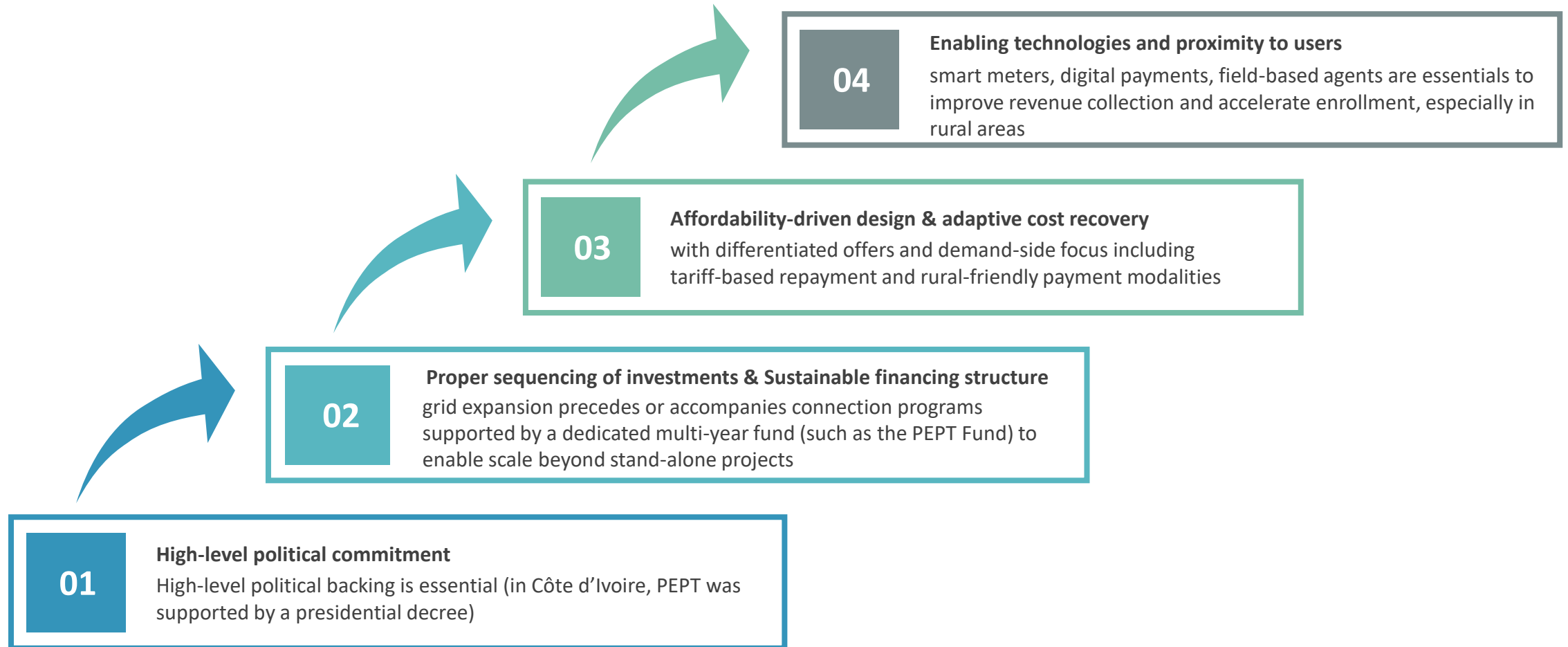
Strong execution capacity and results-driven management
allowing rapid scale-up

04

Innovative and sustainable financing
A blended financing approach combining grants, concessional and commercial loans, and securitization to mobilize long-term capital.



What It Takes to Replicate the Model



Replication is feasible where political commitment, sequencing, affordability, and adaptive financing mechanisms are in place.

Thank you

Q&A Session



Moderator
Thomas Flochel
Senior Energy Specialist

