

**CONFERENCE ON ENERGY EFFICIENCY IN CITIES  
MEXICO CITY, JUNE 17, 2014**

**IVAN JAQUES  
ESMAP, THE WORLD BANK**

# The Energy Efficiency Dimension of Cities



*“Cities are not the problem,  
they are the solution”*

Jaime Lerner



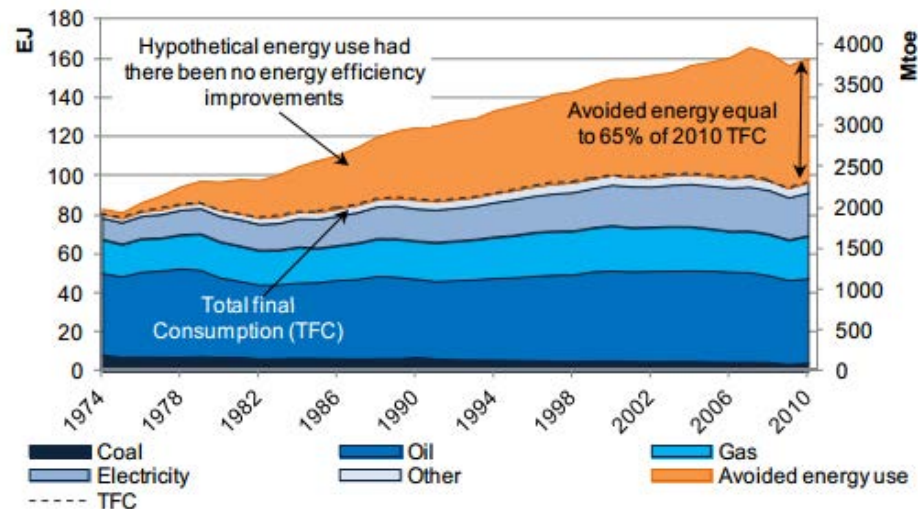




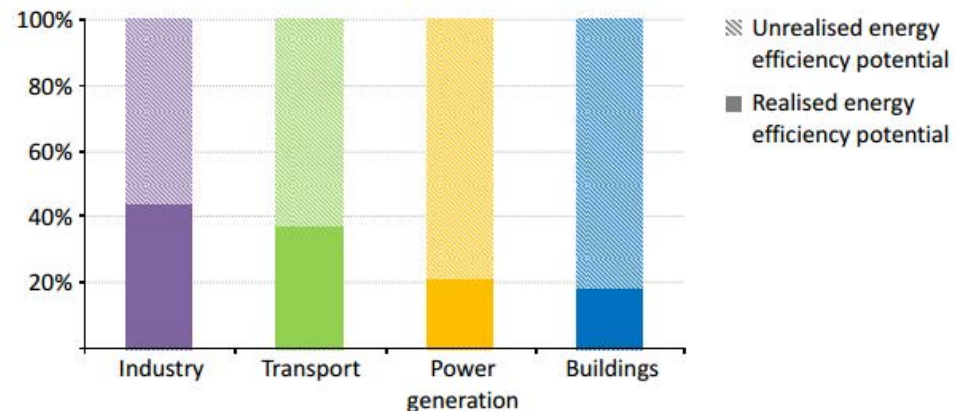
*EE is a means to an end*



# *EE is real, and the potential is huge*




Energy efficiency potential used by sector in the WEO 2012  
New Policies Scenario





*Many barriers ... but also  
many proven solutions*

A nighttime photograph of a city street. In the foreground, a tall streetlight pole with two bright lights stands prominently. The street is illuminated, and several cars are visible in the distance. A semi-transparent white box is overlaid on the center of the image, containing green text. The background shows a multi-story building and other streetlights.

*Cost-effective technologies  
are already here*




*City-wide planning, sectoral interventions*



*Importance of champions,  
leadership and commitments*





*Long-term vision, clear strategies, measurable goals*

A lush tropical forest with a stream flowing through it. The stream is in the foreground, with water cascading over dark rocks. The background is filled with dense green foliage, including various trees and hanging vines. A semi-transparent yellow banner is overlaid across the middle of the image, containing the text "Enabling environment" in a yellow, italicized font.

# *Enabling environment*



A photograph of four young girls in school uniforms, standing in front of a wall with Arabic text. The girls are wearing blue and white striped dresses with white lace collars. They are holding various items, including water bottles and a book. The text "Engage stakeholders, especially users" is overlaid in green on the image.

*Engage stakeholders,  
especially users*





*Start simple, learn by doing,  
learn from peers*

# *Examples of tools and initiatives*

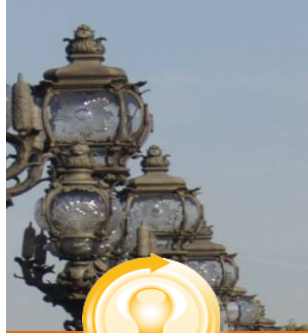
# Tool for Rapid Assessment of City Energy



**TRANSPORT**



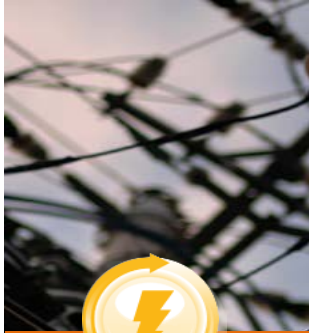
**BUILDINGS**



**PUBLIC LIGHTING**



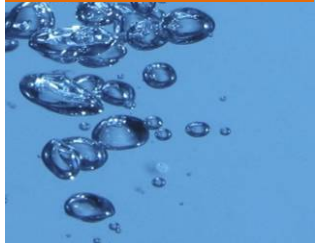
**WATER & WASTEWATER**



**POWER & HEATING**



**SOLID WASTE**





# TRACE APPLIED IN 27 CITIES SO FAR



# City Energy Efficiency Transformation Initiative

Integrating Energy Efficiency into City Planning and Management

TELECO

- Building Capacity through Hands-On Training
- Mapping Out City-Wide Strategies
- Facilitating Access to Financing
- Sharing Experiences and Learning from Peers



# *SE4ALL EE Accelerators*





Iván Jaques: [ijaques@worldbank.org](mailto:ijaques@worldbank.org)

Thank You.

The World Bank | 1818 H Street, NW | Washington DC, USA  
[www.esmap.com](http://www.esmap.com) | [esmap@worldbank.org](mailto:esmap@worldbank.org)

