

# Commercial gas from geothermal

J. Runar Magnusson

*Manager Geothermal Energy & District heating*

## EFLA's Integrated Services



**BUILDINGS**



**PROJECT  
MANAGEMENT**



**TRANSPORTATION**



**ENERGY**



**INDUSTRY**



**ENVIRONMENT**

# EFLA Consulting Engineers

- **Strong emphasis on innovation, cooperation and its employees**
  - > 300 employees
- **ISO and BSI Certifications and Quality Assurance**
  - Certified by the British Standards Institution (BSI) in accordance with ISO 9001 (Quality Management),
  - ISO 14001 (Environmental Management) and OHSAS 18001 (Health and Safety Management).
  - Operates according to the Nordic Built charter
  - Icelandic Quality Award
  - The Icelandic Environmental Award
  - “The strongest in Iceland” in 2010-2015 in terms of financial standing



## Locations

EFLA's base is in Iceland, with headquarters in the capital city, Reykjavík.

EFLA has significant international activities, with affiliated companies in Norway, Sweden, France, Poland, Turkey and Dubai and participates in engineering projects around the globe.



CO<sub>2</sub> Production at  
Hædarendi, Iceland

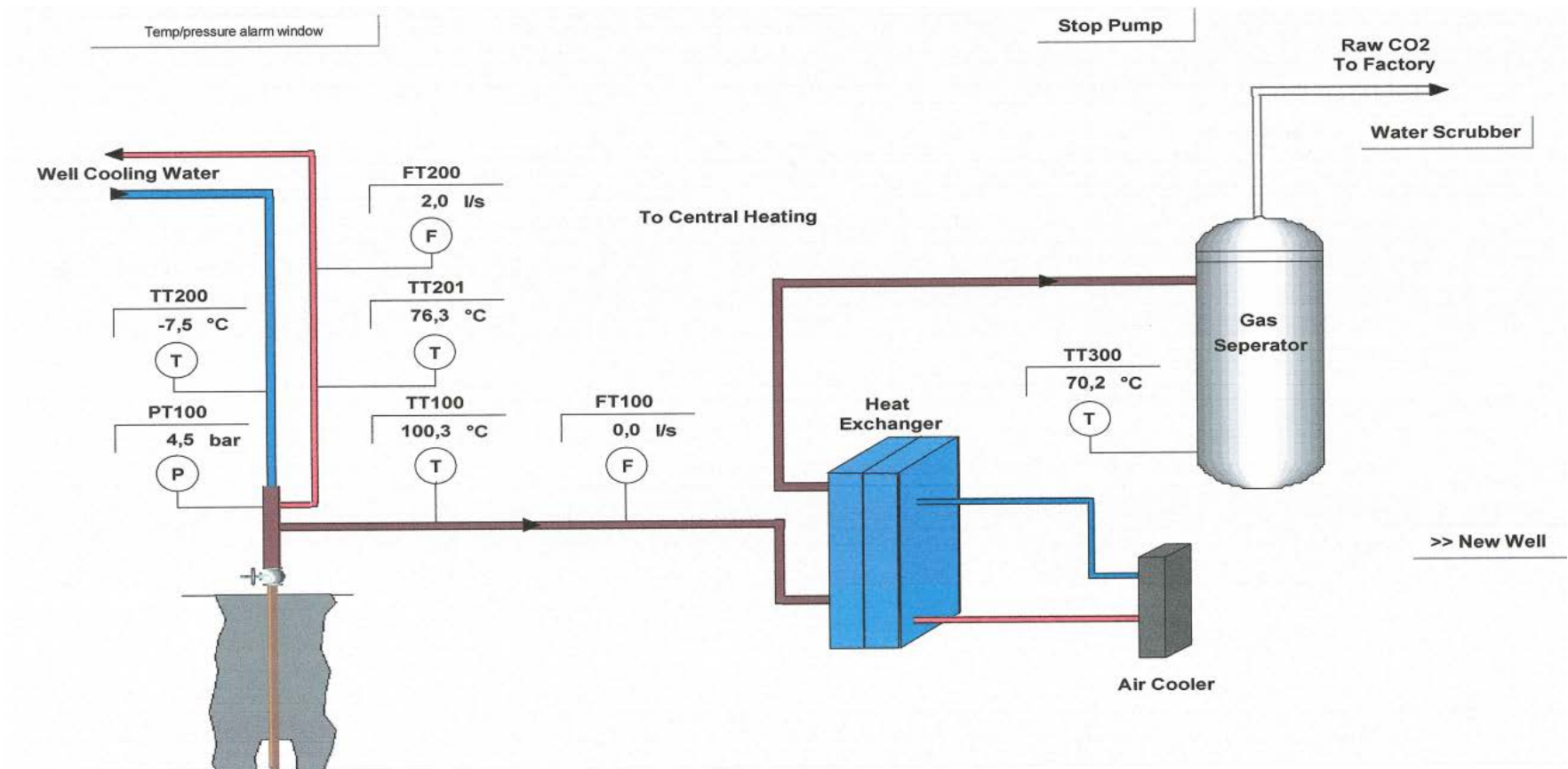


Storage Capacity

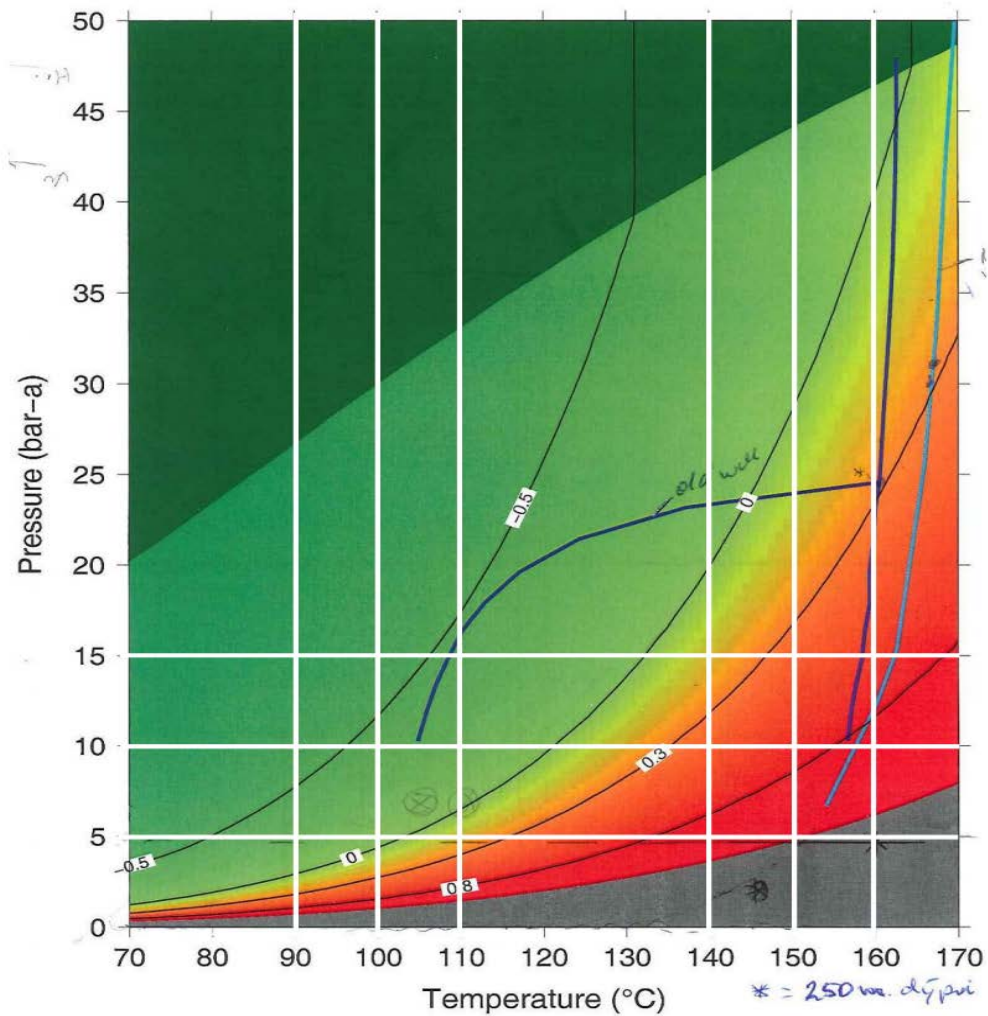
>200 tonn Liquid CO<sub>2</sub>

01.08.2003

# Well no. 2 with downhole heat exchanger

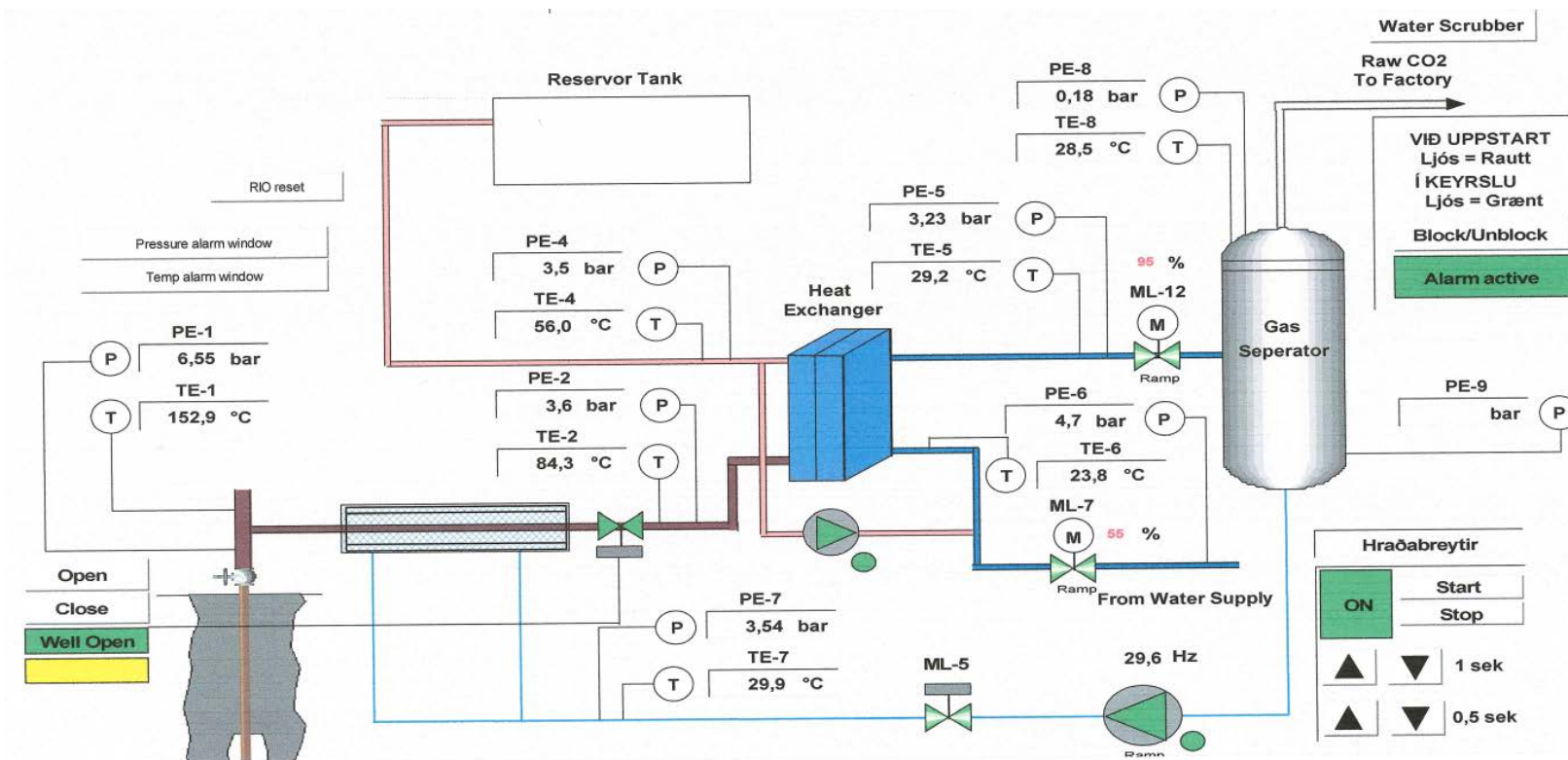


## Calcium carbonate saturation index for well no. 2

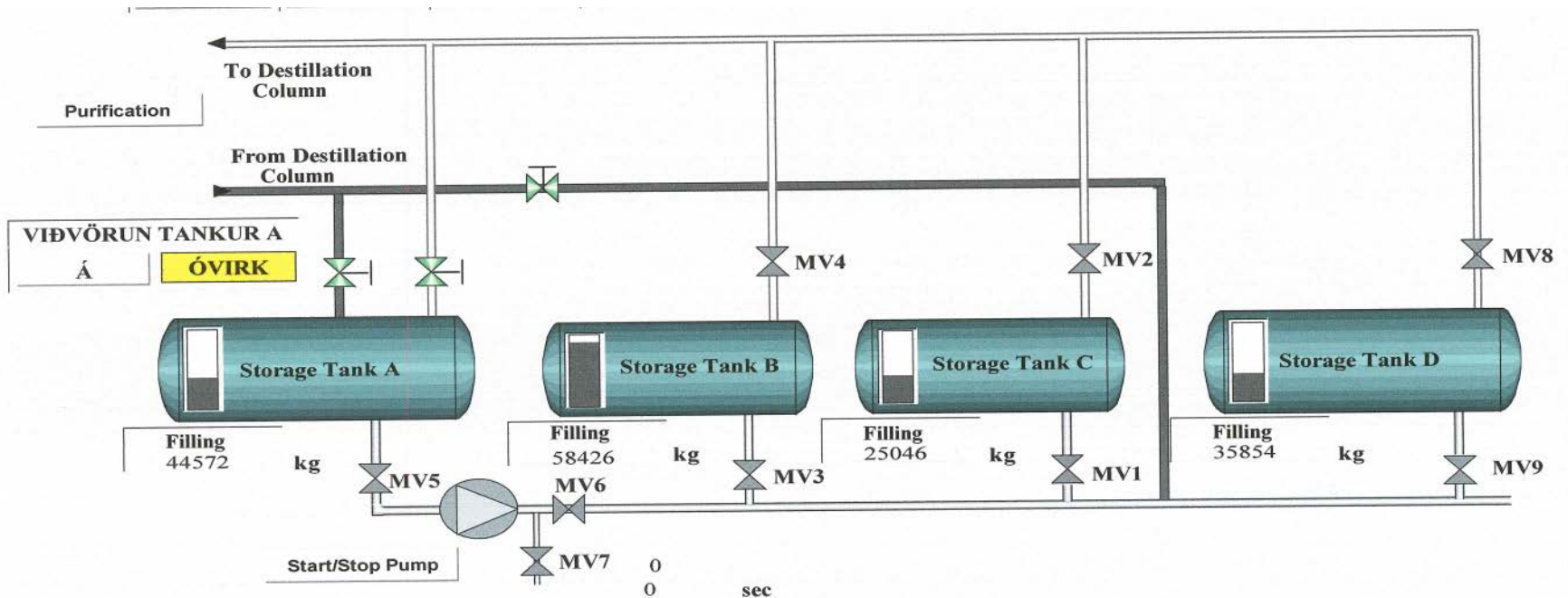




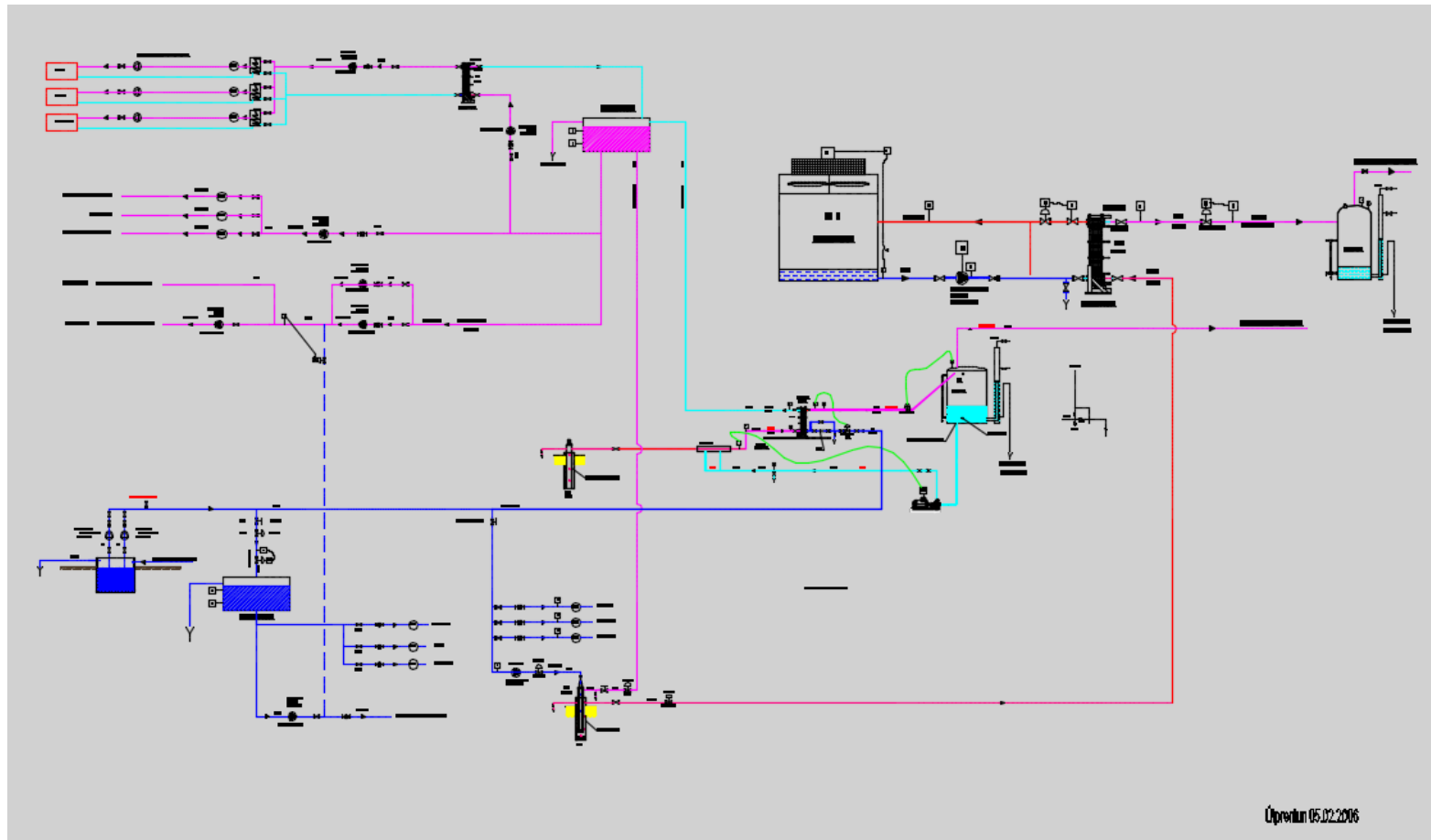
# Well no. 7 without downhole heat exchanger



# Storage capacity at Hædarendi, quality control



# Seperation system for CO<sub>2</sub> and direct heat use



## Overview of the production facility of Hædarendi



## AGA/Linde supply of CO<sub>2</sub> to the food industry



Thank you

